

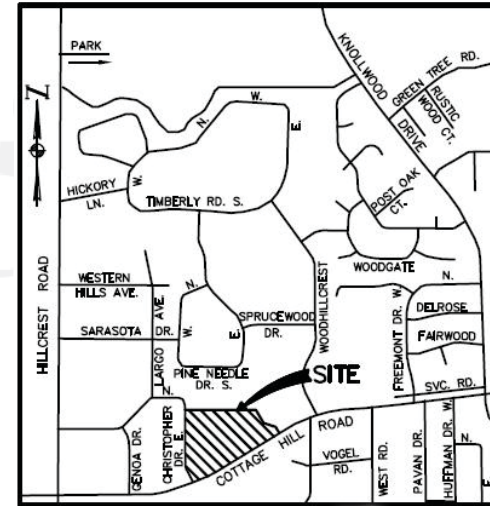
# SNOWDEN PLACE

## Mobile's Newest Private Community

Situated in the heart of West Mobile on Cottage Hill Road, Snowden Place is a completely unique, private, upscale, gated residential community. Conveniently located near everything in the city, it is the only development of its kind in Mobile combining both residential homesites and townhome units. Each resident will have full access to all of the on-site amenities, including swimming, tennis, and fishing. By design, Snowden Place is limited to only 15 single-family homesites and 35 townhome units, offering an unprecedented, exclusive residential community in one of the most beautiful and convenient locations in the city of Mobile.

## Planned Amenities

- Private street with gated entrance and restricted security code access.
- 3.5 acre fishing lake stocked with bass and bream, home to turtles, migratory ducks, geese, egrets and other water fowl.
- Large Gazebo and pier in the center of the lake.
- Barbeque facilities on the Gazebo and near the pool area.
- Lakeside boardwalk.
- Swimming pool with cabana and bathhouse.
- Lighted tennis court for the exclusive use of Snowden Place residents.
- Putting green near the pool area.
- Beautiful common area landscaping nestled among beautiful oaks.
- Brick columned fence along Cottage Hill Road.
- Privacy fence surrounding the entire perimeter of the property.



## Location

- Located on Cottage Hill Road between Knollwood Drive and Hillcrest Road.
- Many restaurants and shopping facilities nearby.
- Less than 10 minutes from Colonial Bel Air Mall, Springdale Mall, Mobile Festival Center, and the Schillinger Road retail and restaurant corridor.
- Less than 5 minutes from U. S. Interstate Highway 10.
- Less than 10 minutes from U. S. Interstate Highway 65.
- Less than 10 minutes from the Mobile Regional Airport.
- Less than 15 minutes from downtown Mobile.
- Only minutes away from many churches, parks, and public and private schools.